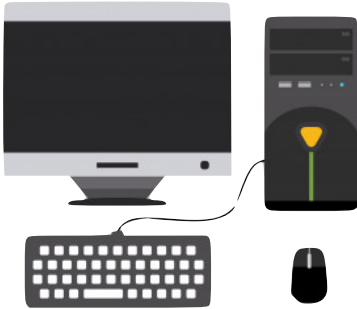


KNOW THE NAMES

Add the name into the description below

Laptop Computer Smart Phone Desktop Computer Tablet



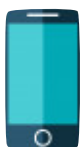
_____ are big computers that need to be plugged into power and are designed to sit in one place.



_____ are small enough to carry around, and can run on batteries. Laptops have keyboards and track - or touch - pads.



_____ are even smaller than laptops, being about the size of a book. They also run on batteries. Tablets are mostly controlled by a using a touchscreen.



_____ are small enough to fit in your pocket and can be used to make phone calls. Smartphones are also mostly controlled by touchscreens.

DRAW YOUR DESKTOP

Draw your device below and label the important parts with the related number



1. The computer case, which contains the 'brains' of the desktop computer. All the other parts of desktop computer connect to the case.

2. The screen, which lets you see what's happening on the computer. Some desktop computers combine the screen with the computer case, or box.

3. The keyboard lets you type text, numbers and symbols into the computer.

4. The mouse, which lets you point to and move items you see on the screen.

5. The speakers - These are used to make sound.

6. Power button -To turn a desktop computer on or off, you need to press the power button. Look for a button with a symbol that looks like a circle with a line through it. Don't worry if it takes a minute to start - that's normal.



7. USB ports - This is where you plug in things like your printer, your camera, your mobile phone and any extra devices.

8. _____
(write your own extra label)