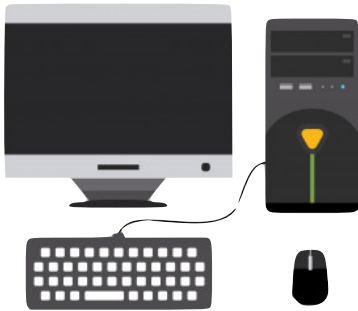


KNOW THE NAMES

Add the name into the description below

Laptop Computer Smart Phone Desktop Computer Tablet



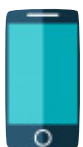
_____ are big computers that need to be plugged into power and are designed to sit in one place.



_____ are small enough to carry around, and can run on batteries. Laptops have keyboards and track - or touch - pads.



_____ are even smaller than laptops, being about the size of a book. They also run on batteries. Tablets are mostly controlled by a using a touchscreen.



_____ are small enough to fit in your pocket and can be used to make phone calls. Smartphones are also mostly controlled by touchscreens.

DRAW YOUR DEVICE

Draw your device below and label the important parts with the related number



1. The touchscreen. This takes up most of the face of the device. The touchscreen shows you what's happening on the device and lets you to control it with your fingertips.

2. The Home button. This is usually just below the screen. Pressing it takes you back to the main screen, or start screen. On some devices, the Home button is on the screen itself.

3. Charging Port. This is where you plug in your charger.

4. Volume Buttons. This is how you can make your device volume louder or quieter.

5. Cameras. There will be a tiny camera just above the screen. This is used for video chatting. A second camera on the back of the device is used for taking photos.

6. The Power Button. Often on the top or the side of the device, this button allows you to put the device to sleep or power off completely.

7. _____
(write your own extra label)